

DIGIMAKER 6.1



Installation Guide

May 2010

Copyright and Proprietary Information

© **Digimaker™ 2010**. This user guide constitutes proprietary information of Digimaker. No part of this user guide may be reproduced, transmitted, transcribed, stored in a retrieval system or translated into any language in any form, by any means, without the written permission of Digimaker.

Digimaker reserves the right to make changes in this user guide at any time and without notice. Digimaker makes no warranties, express or implied, in this user guide. In no event shall Digimaker be liable for any indirect, special, incidental or consequential damages arising out of purchase or use of this user guide or the information contained herein.

Installing Digimaker 6.1

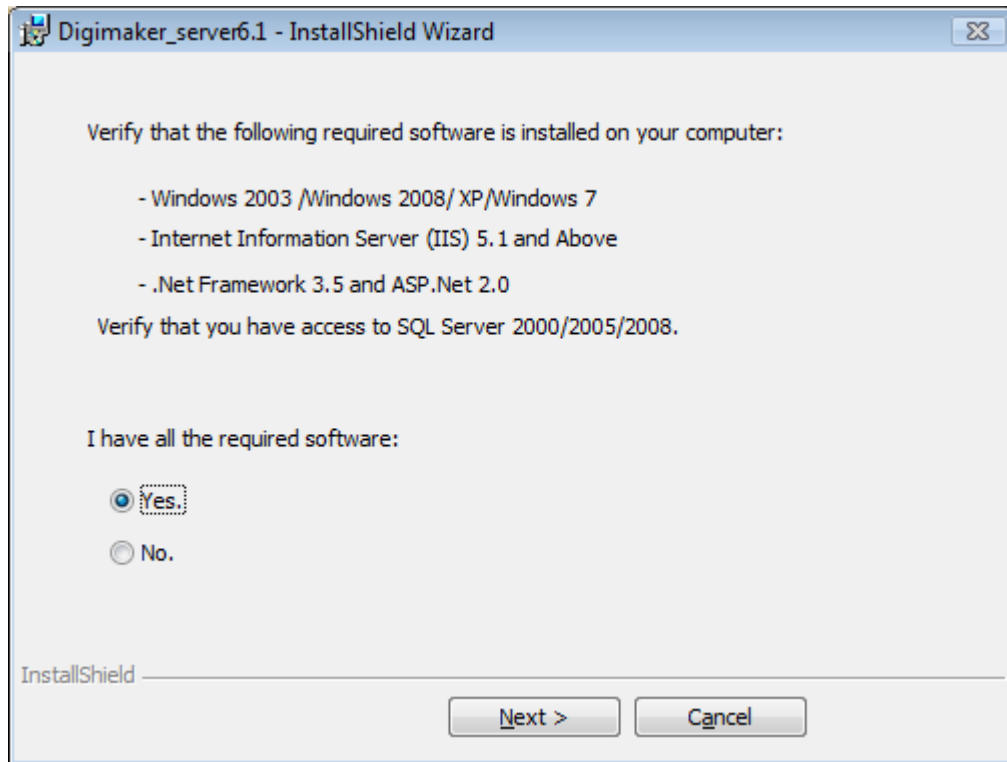


Figure 1 -Install Wizard

Step1: If you have the required software listed on this screen choose **Yes** to proceed, you must have all the required applications installed before installing Digimaker 6.1.

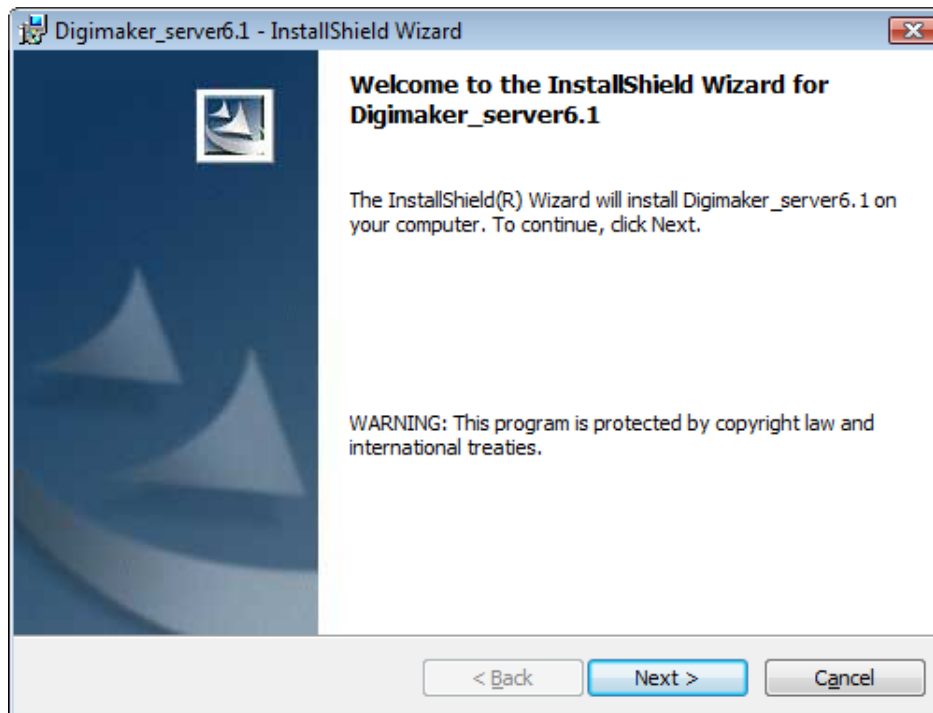


Figure 2: Required Software

Step 2: Double click on the Digimaker Installer. The Install wizard screen appears. Click next to go to the required software screen.



Figure 3 -License Agreement

Step 3: Read the License Agreement carefully and select the I accept the terms in the license agreement option.

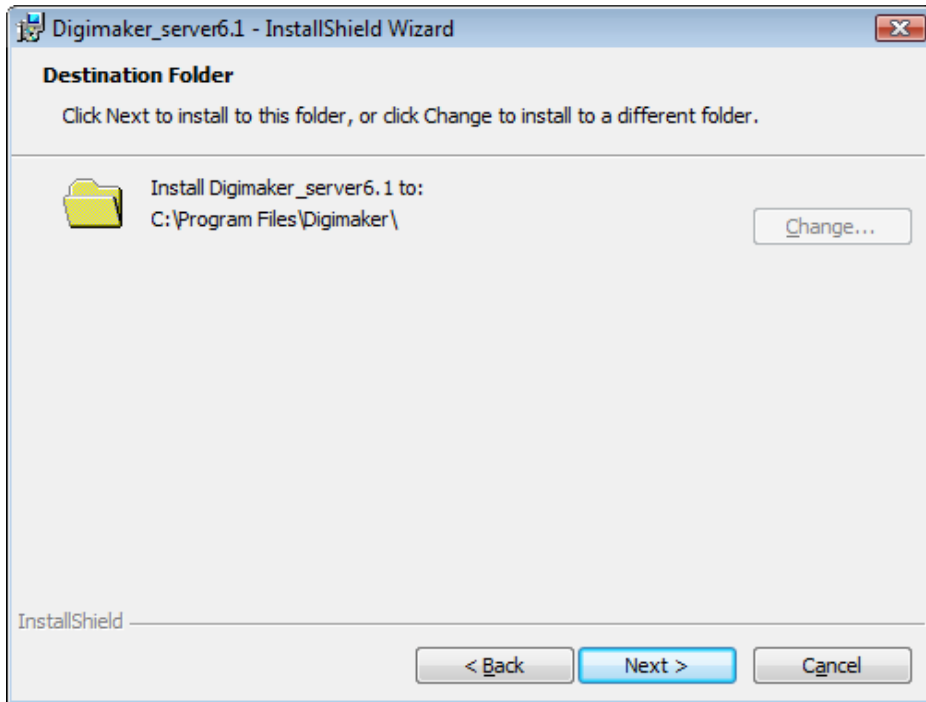


Figure 3 -Destination Folder

Step 4: Click Next to open the Destination Folder screen. Choose the appropriate destination folder by using the Change button.

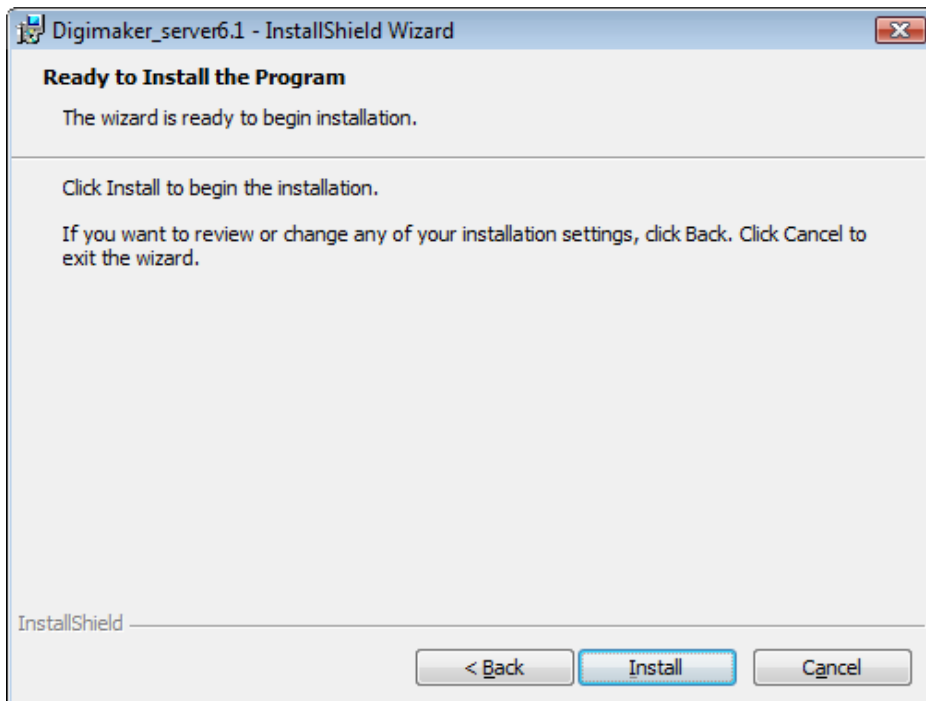


Figure 4 -Ready to Install

Step 5: Click Next to open the Ready to Install the Program screen. Digimaker is now ready for installation.

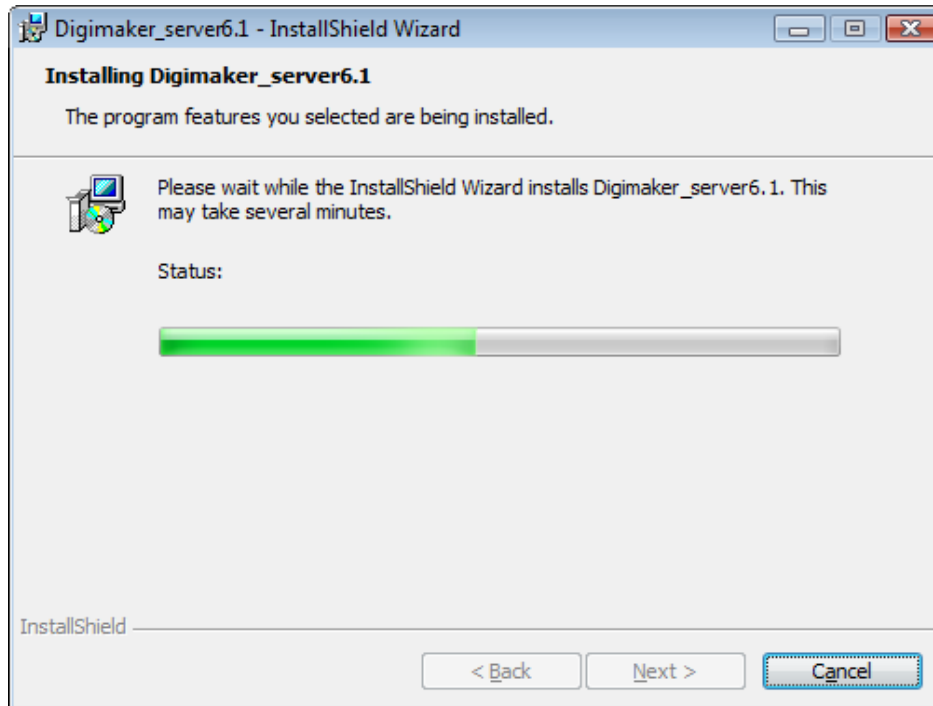


Figure 5 -Installing

Step 6: Click **Next** to start the installation. The Digimaker Installer now completes the installation process.

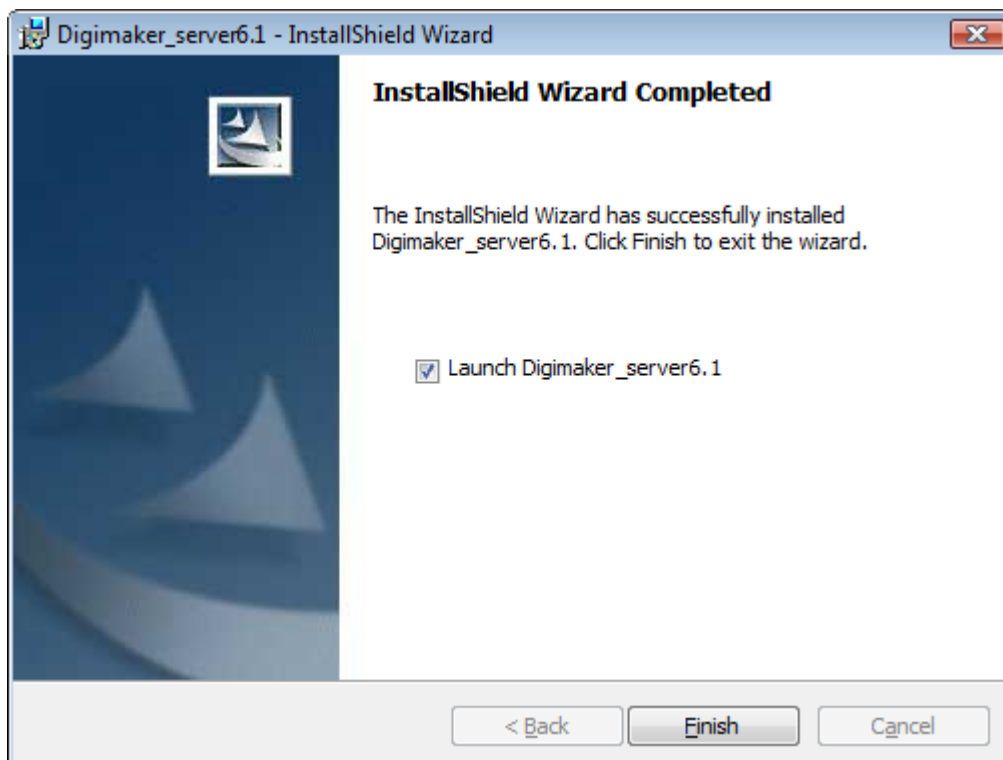


Figure 5 -Installation Complete

Step 7: After the installer completes you are given the option to start Digimaker Server 6.1. Select the option to start the application when you click on **Finish**.

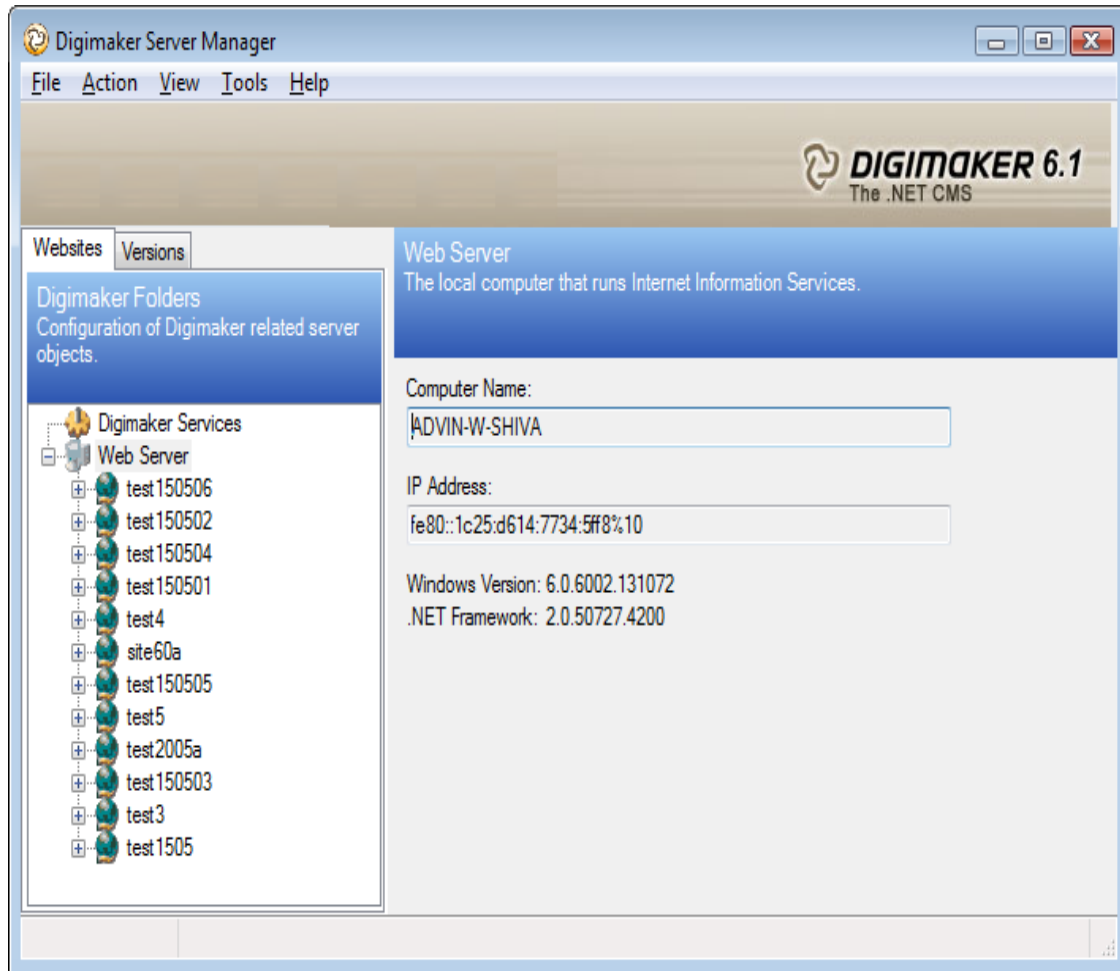


Figure 7: Digimaker Server Manager

After the application has started you should see the Digimaker server Manager screen (Figure 7).