
DIGIMAKER 6.0



Digimaker 6.0 How to guides

© **Digimaker™ 2008**. This user guide constitutes proprietary information of Digimaker. No part of this user guide may be reproduced, transmitted, transcribed, stored in a retrieval system or translated into any language in any form, by any means, without the written permission of Digimaker.

Digimaker reserves the right to make changes in this user guide at any time and without notice. Digimaker makes no warranties, express or implied, in this user guide. In no event shall Digimaker be liable for any indirect, special, incidental or consequential damages arising out of purchase or use of this user guide or the information contained herein.

1.1 How to Add a New Design Template

Adding a new design template is something that should only be attempted by very advanced users with the programming skills required to implement a Digimaker System.

- Step 1:** In Workspace click on Upload design template from the shortcuts or in the submenu of **Settings**, position the mouse over the **Templates** menu item. A menu will then appear. Choose **Add template**.

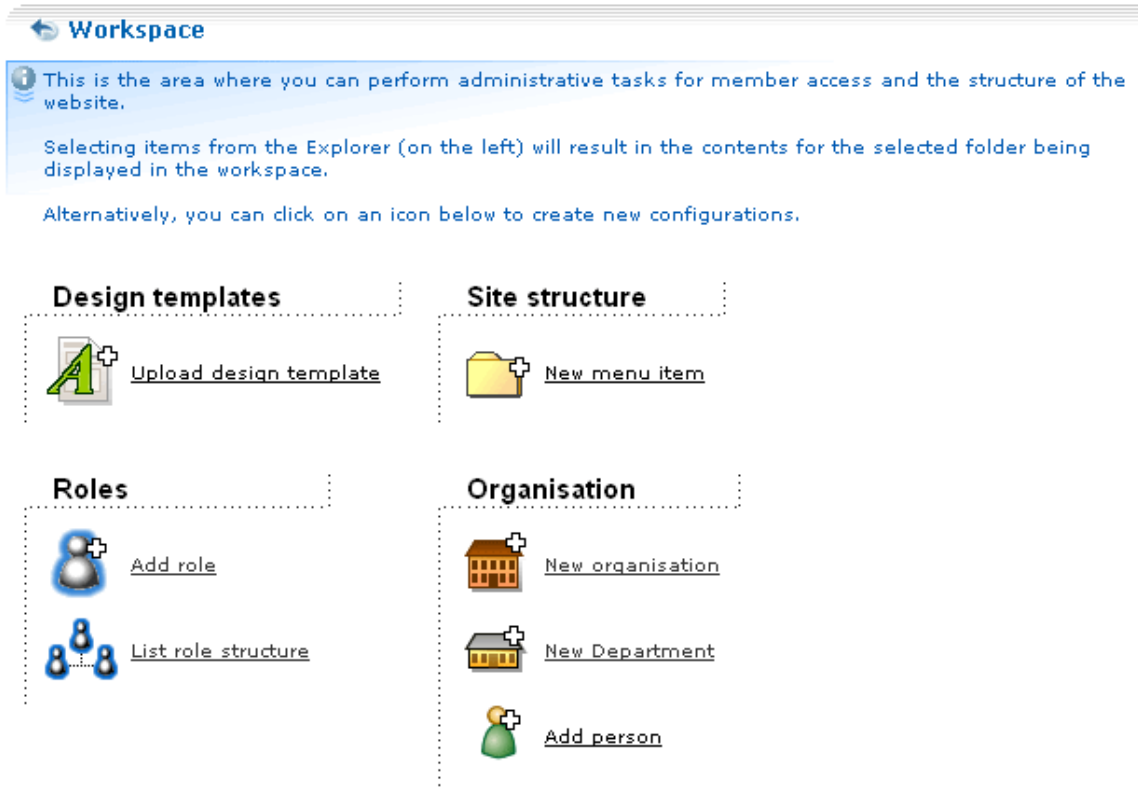


Figure Error! No text of specified style in document.: Settings Workspace

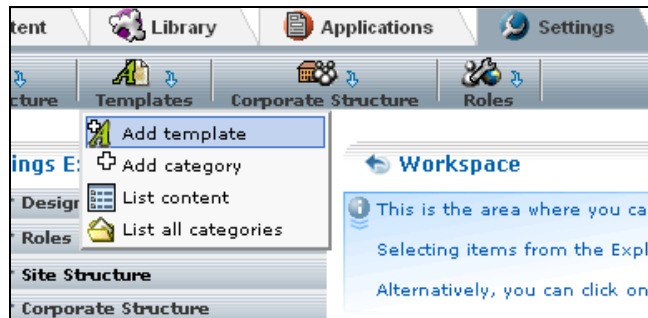


Figure 2: Templates submenu

Clicking the icon  next to the **Design template categories** element in **Settings Explorer** displays a pop-up menu. Choose **Add template**.

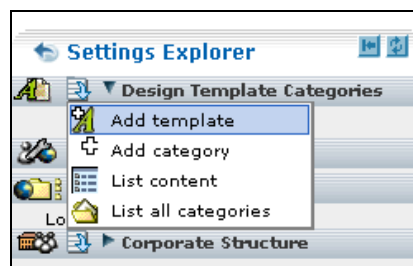


Figure 3: Settings Explorer

In **Design template categories** element locate the menu item that you want to add a new design template in, then select **Add template** from the pop-up menu.

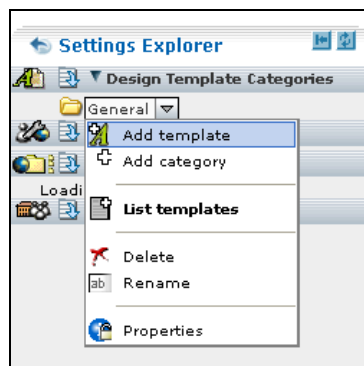


Figure 4: Add Template

Step 2: You will now see a workspace where you can enter the properties of the new design template.

← Add new design template

Template settings

Template name *

Template URL *

Select template placement *

Template type

Regular menuitem template

Campaign design template (.xsl)

For listing articles inside a campaign (.xsl)

Image

Description

Global Metakeys

Global Meta description

Figure 5: Add new design template

The creation of a new design template involves the definition of the following properties:

Template name allows you to give the design template a name.

Template URL is the location of the template file on the server.

Select template placement allows you to define where the template will be placed in the Design template categories structure.

Note! If you use option 4 (see above) in accessing the Add template workspace you do not have to define this unless you want to change the placement.

Template type allows you to define what type of template you will be adding by selecting one of the template types listed below using the radio button options.

- Regular menuitem template - is used to link to an .aspx page. This menuitem is displayed in the properties window of the menuitem and is listed under the label titled **Design template**.
- Campaign design template (.xsl) - is used to create a campaign design page. This campaign design template is displayed in the properties window of the campaign and is listed under the label titled **Design template**.

- For listing articles inside a campaign (.xsl) - is used to create an Article list in a campaign. This campaign design is displayed in the properties window of the campaign and is listed under the label titled **Article list templates**.

Image allows you to upload/search for an image used to represent the design template in the system template library.

Remove allows you to remove a selected image

Upload displays a new window in which you may upload a new image. For more information about uploading images, refer **Section 11:1** by downloading the [Digimaker CMS End User Manual](#)

Search displays a new window where you can search for images that are already uploaded.

Description allows you to enter a description of how the design template works.

Global meta keywords allows you to enter Meta keywords you want to apply for the design template. These will be used by all web pages based on the new design template.

Global Meta description allows you to enter meta-description you want to apply for the design template. This will be used by all web pages based on the new design template.

Step 3: Select **Save** to save the design template, or **Apply** if you want to save the template but stay in the same view. Press **cancel** to abort the operation.

In order to assign the new design template to a menu item, you need to enter the menu item properties and define the design template. Your new design template will then be displayed in the Design template drop-down list.

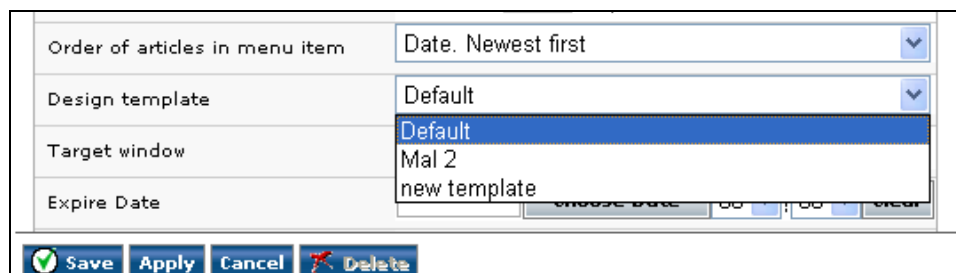


Figure 6: Design Template Drop-down List

Step 4: Select **Save** to assign the new design template to the selected menu groups.